

omnissa™

Workspace ONE

Unified Endpoint Management

Managing iOS

Speaker Name

Division/Role

Date

Why Customers Choose Omnissa to Manage iOS

Handle all your UEM needs and then some...

Alignment with Apple

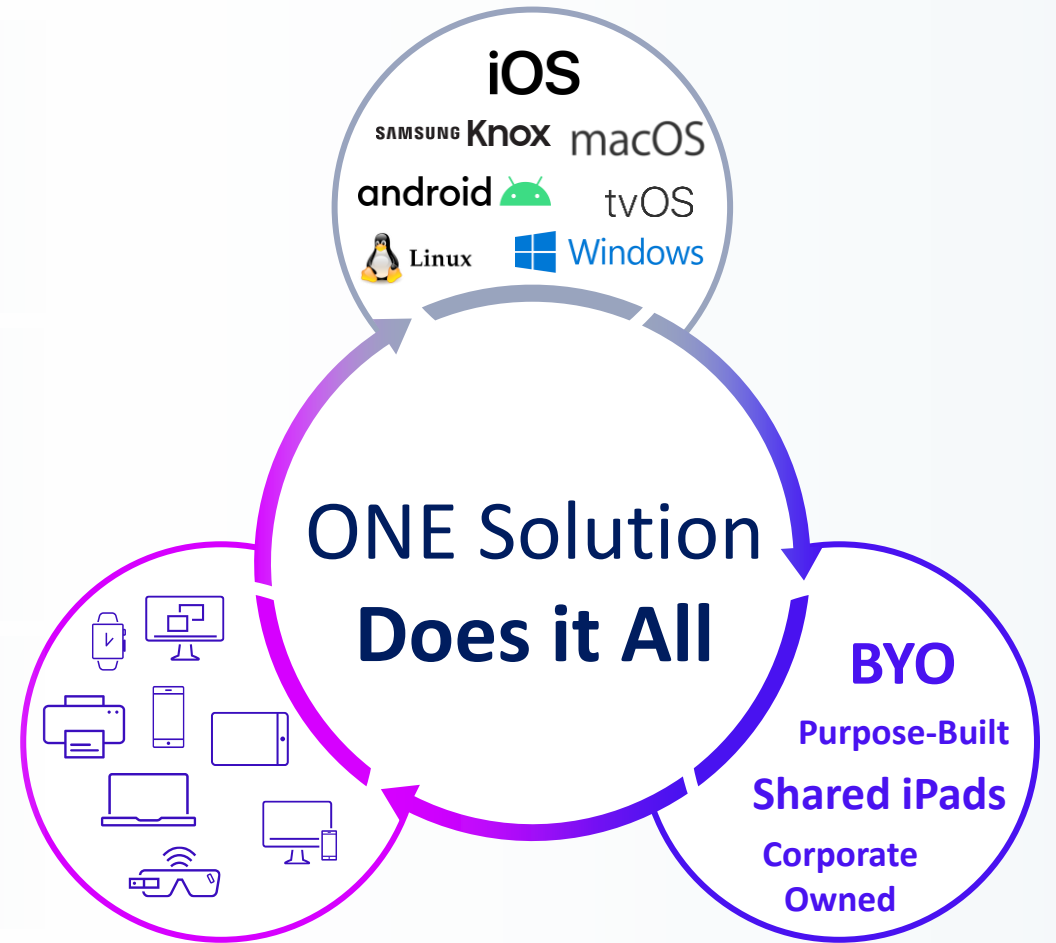
- Apple @ Work
- Employee Experience

Consolidation: ONE Solution

- Manage all Apple platforms with a single solution
- Every platform, Every device type, Every use case

Advanced Capabilities

- Freestyle:** Workflow automation
- Intelligence:** Analytics
- Assist:** Remote Support
- DEX:** Employee Experience Mgt



Why do enterprises choose Omnissa to manage iOS?

Why is Workspace ONE the best management platform for iOS and iPadOS?

- Recognized by analysts as global leader and pioneer
 - Gartner
 - Forrester
 - IDC
- Millions of active iOS devices under management
- Customers from 50 devices to hundreds of thousands
- Next gen architecture built on microservices: a faster and more responsive UEM platform
 - 10x speed improvement via Resource Delivery Optimization
 - Better filters for device states
 - Faster load times in console
 - Greatly improved scalability

Device Management Across Every Vertical



Next-Gen SaaS Architecture

Platform centered around Desired State Management

Modularity

Microservices are highly granular and interdependently built and deployed.



Resiliency

Eliminates single point of failure through distribution of coherent functionality to various microservices.



Stateless

Provides stateless communication.



Loose Coupling

Loosely coupled with minimal dependency.



Single Functionality Principle

Each microservice encapsulates a single business functionality or use-case.



Extensibility

Leveraged to create an extensible solution by quickly onboarding new ones.



High Performance & Scalability

Containerized services can be leveraged for high performance and availability.



Self-containment

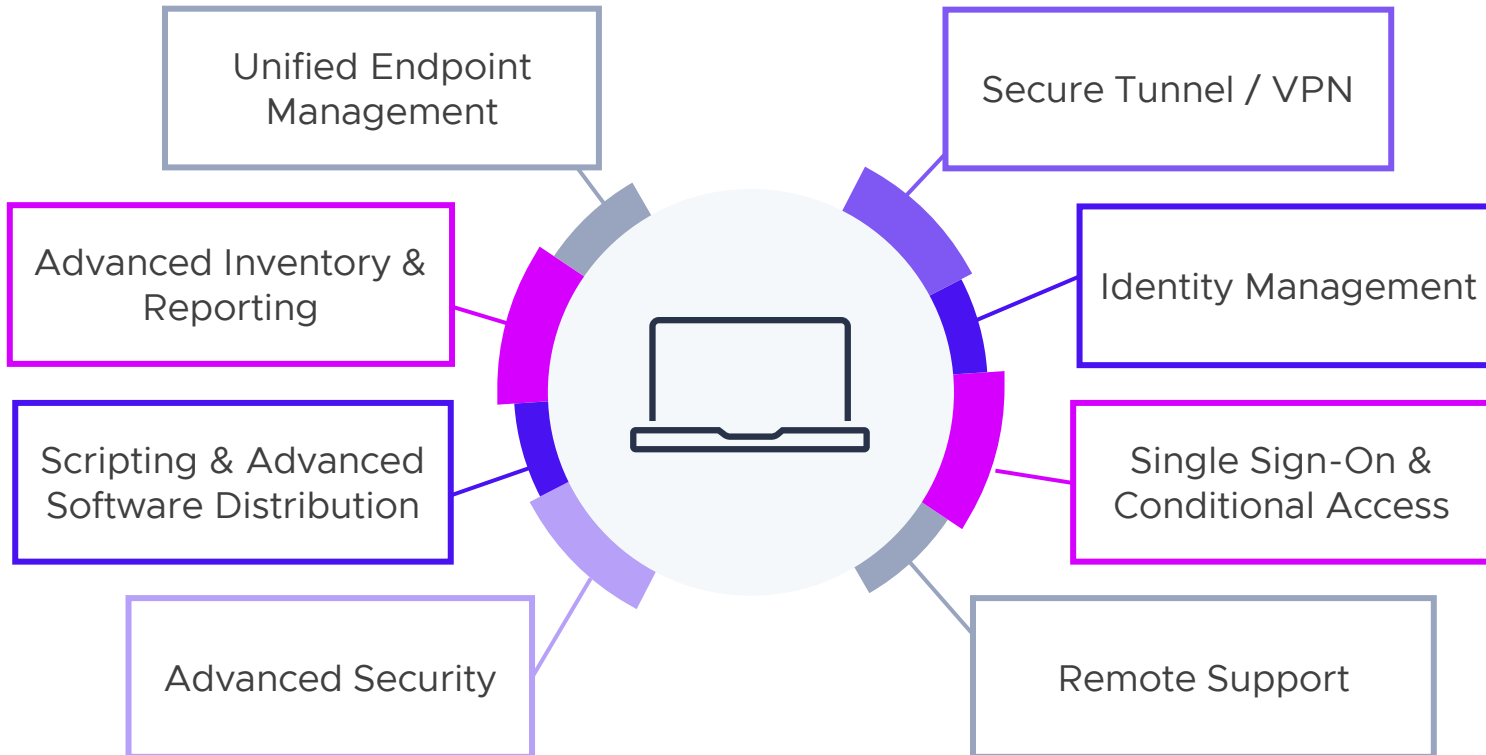
Self-contained as it includes all dependent libraries, databases.



iOS Management Capabilities

What's in an iOS environment?

How can all these systems and processes work together?



60%
of IT orgs
use more than **9**
tools to manage
their devices¹

1. 2022 State of IT Operations, Powering the Modern Workforce, AimPoint Group

Employee's First Experience

Automated onboarding

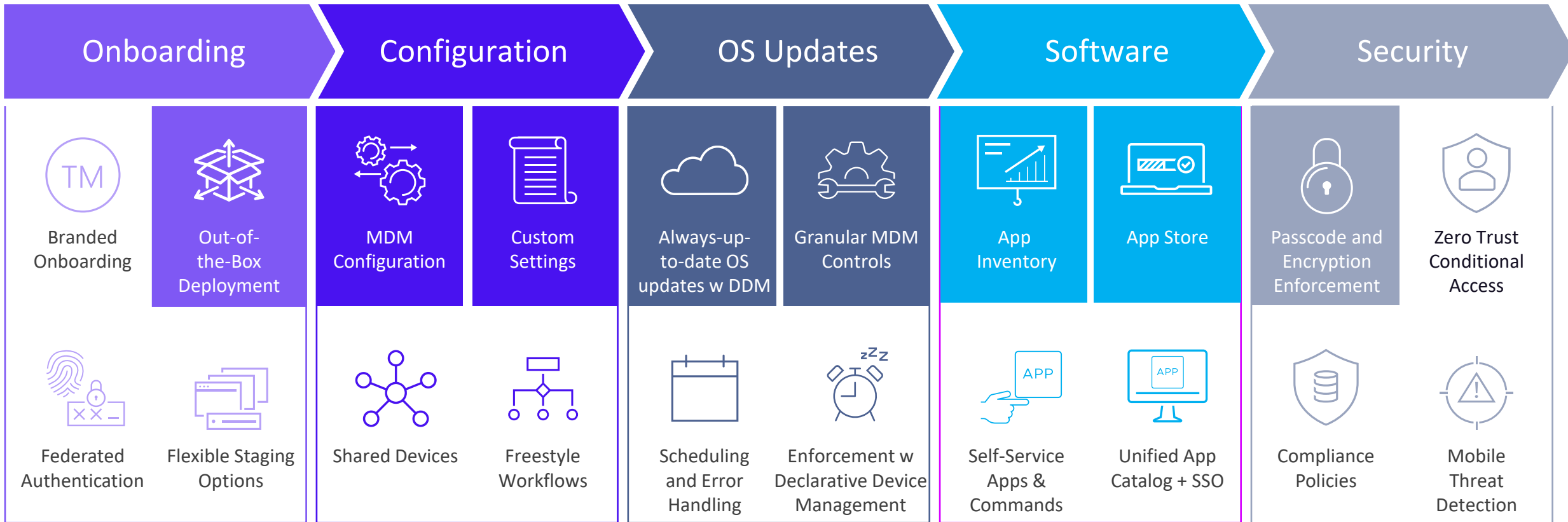
Automated Zero-Touch, Over-The-Air Onboarding With ABM



Create a Positive **Employee Experience** from the Start

Workspace ONE Embraces the Apple MDM Framework

Cloud management for iOS



Managing iOS Updates

Version selection and scheduling



Dashboard automatically populated with latest available OS updates



Customize update behavior with dynamic assignments



Built in retry logic and error handling



Update behavior escalation: Allow user flexibility at first, but forcefully deploy the update if non-compliant

The screenshot shows the 'Device Updates' page in the Workspace ONE UEM console. The page is titled 'Device Updates' and has tabs for 'Windows', 'OEM Updates', 'iOS', 'macOS', and 'Android (Zebra)'. The 'iOS' tab is selected. Below the tabs are buttons for 'MANAGE ASSIGNMENTS' and 'PAUSE'. A table lists various iOS updates with the following columns: Update, Version, Release Date, Expiration Date, Update Status, Assignments, and Assignment Status. The table contains 20 rows of data, showing updates ranging from version 16.7.7 to 17.5.1. The 'Update Status' column indicates whether an update is 'Available' or 'Not Available'. The 'Assignments' column shows the number of devices assigned to each update, and the 'Assignment Status' column shows the current status of the assignment.

Update	Version	Release Date	Expiration Date	Update Status	Assignments	Assignment Status
IOS	17.5.1	5/20/2024	10/10/2024	Available	0	Not Assigned
IOS	17.5	5/13/2024	10/10/2024	Available	0	Not Assigned
IOS	17.4.1	3/21/2024	8/11/2024	Available	0	Not Assigned
IOS	17.4	3/5/2024	6/19/2024	Not Available	0	Not Assigned
IOS	17.3.1	2/19/2024	6/3/2024	Not Available	0	Not Assigned
IOS	17.3	1/22/2024	5/8/2024	Not Available	0	Not Assigned
IOS	17.2.1	12/19/2023	4/21/2024	Not Available	0	Not Assigned
IOS	17.2	12/11/2023	4/21/2024	Not Available	0	Not Assigned
IOS	17.1.2	11/30/2023	3/10/2024	Not Available	0	Not Assigned
IOS	17.1.1	11/7/2023	2/28/2024	Not Available	0	Not Assigned
IOS	17.1	10/25/2023	2/5/2024	Not Available	0	Not Assigned
IOS	17.0.3	10/4/2023	1/23/2024	Not Available	0	Not Assigned
IOS	17.0.2	9/21/2023	1/2/2024	Not Available	0	Not Assigned
IOS	17.0.1	9/21/2023	12/25/2023	Not Available	0	Not Assigned
IOS	17.0	9/18/2023	12/20/2023	Not Available	0	Not Assigned
IOS	16.7.8	5/13/2024	10/10/2024	Available	0	Not Assigned
IOS	16.7.7	3/21/2024	8/11/2024	Available	0	Not Assigned

Software Updates

Support for the latest technology from Apple

Declarative Device Management*

UEM framework rebuilt to support desired state management and allow adoption of DDM protocol

Software Update Enforcement



Specify version, schedule date & time for update



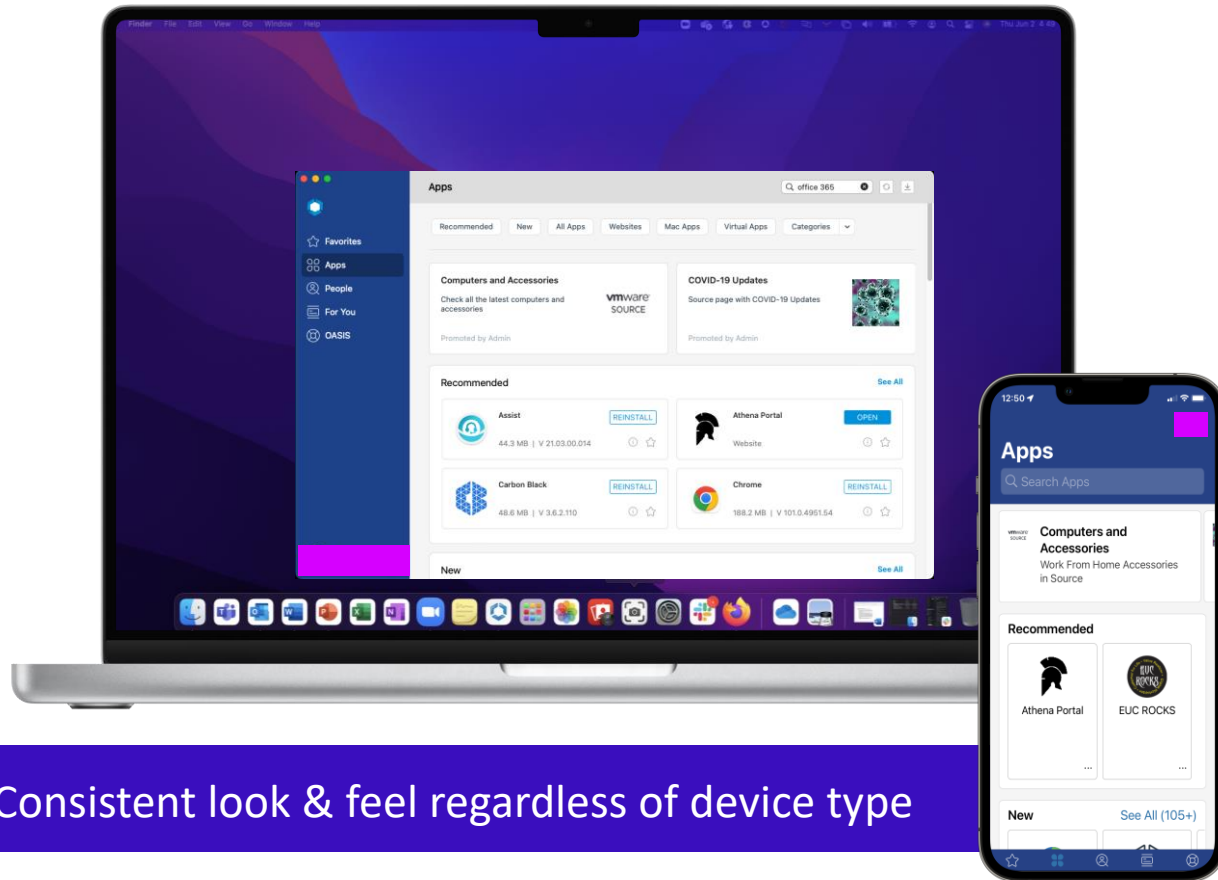
Users notified weeks in advance, multiple times before



Update enforced at specified date & time

Frictionless Access to All Applications

Intelligent Hub ensures consistent user experience on every device



Consistent look & feel regardless of device type



One place to go for all your business apps, native, web and virtual, optimized by device type



One-touch mobile single sign-on (SSO) using device trust



Simple self-service app downloads and script management



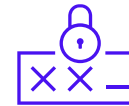
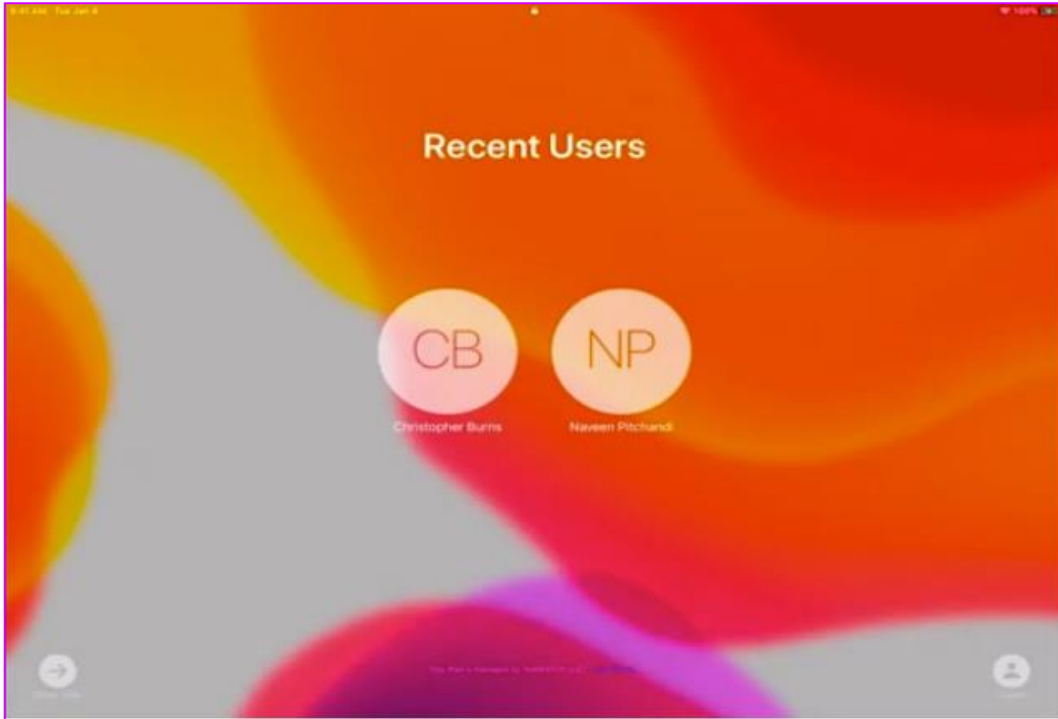
License and deploy App Store apps with **Volume Purchase Program**



Privacy by design: users' personal apps and data can remain invisible to IT

Shared iPads

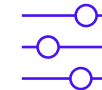
Full support in iPadOS for multiple users of a single device



SIGN-IN PROCESS for each user with Managed Apple ID



DATA PARTITIONED for each user, so privacy is maintained



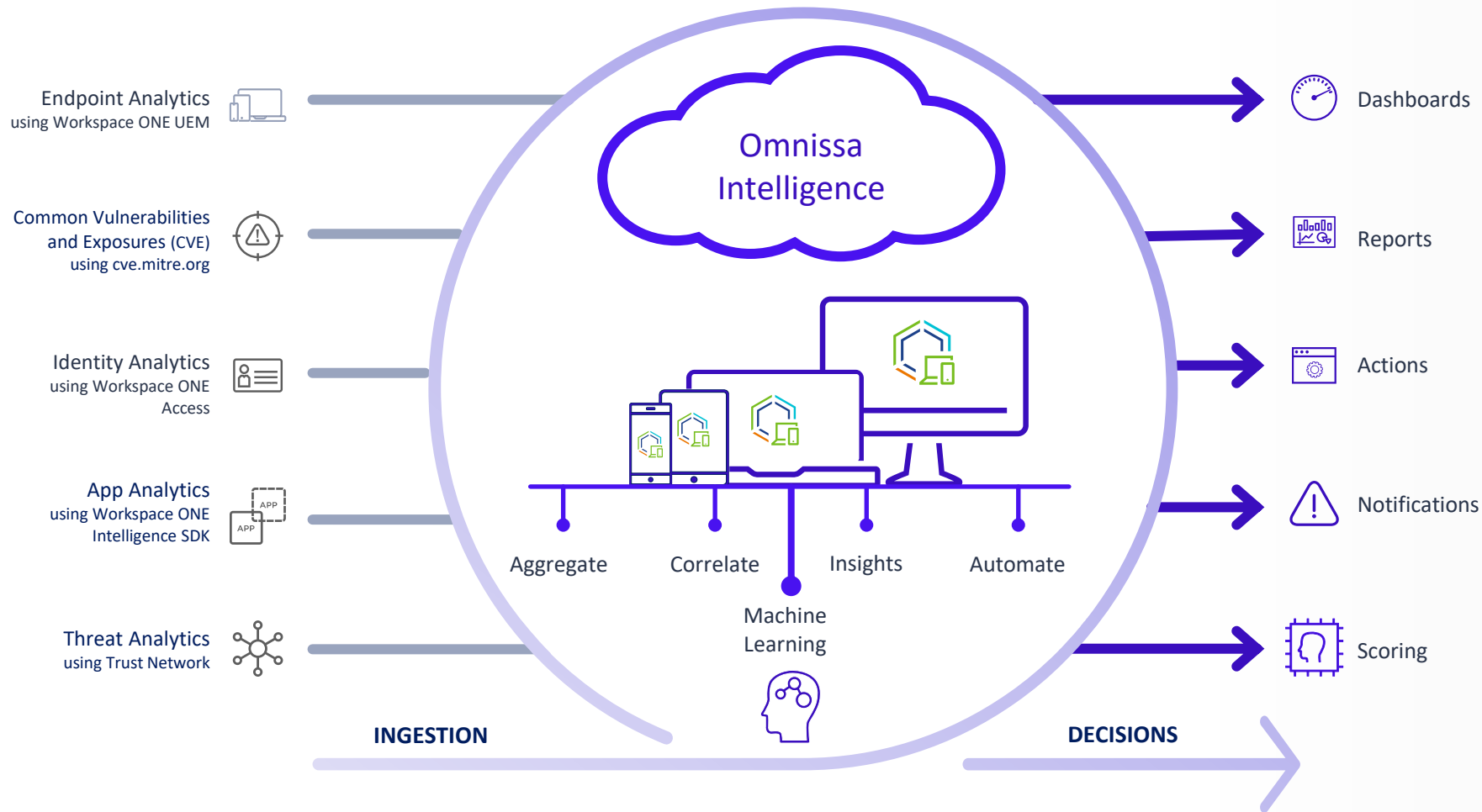
DEVICE PREFERENCES ARE PERSONALIZED for each user based on configured settings



NATIVE CHECK-IN/CHECK-OUT experience and built-in security

Get Better Insights and Automate Actions Across Your Environment

Omnissa Intelligence



Integrated Insights: Get complete visibility into your digital workspace and enable data driven decisions across your entire environment.



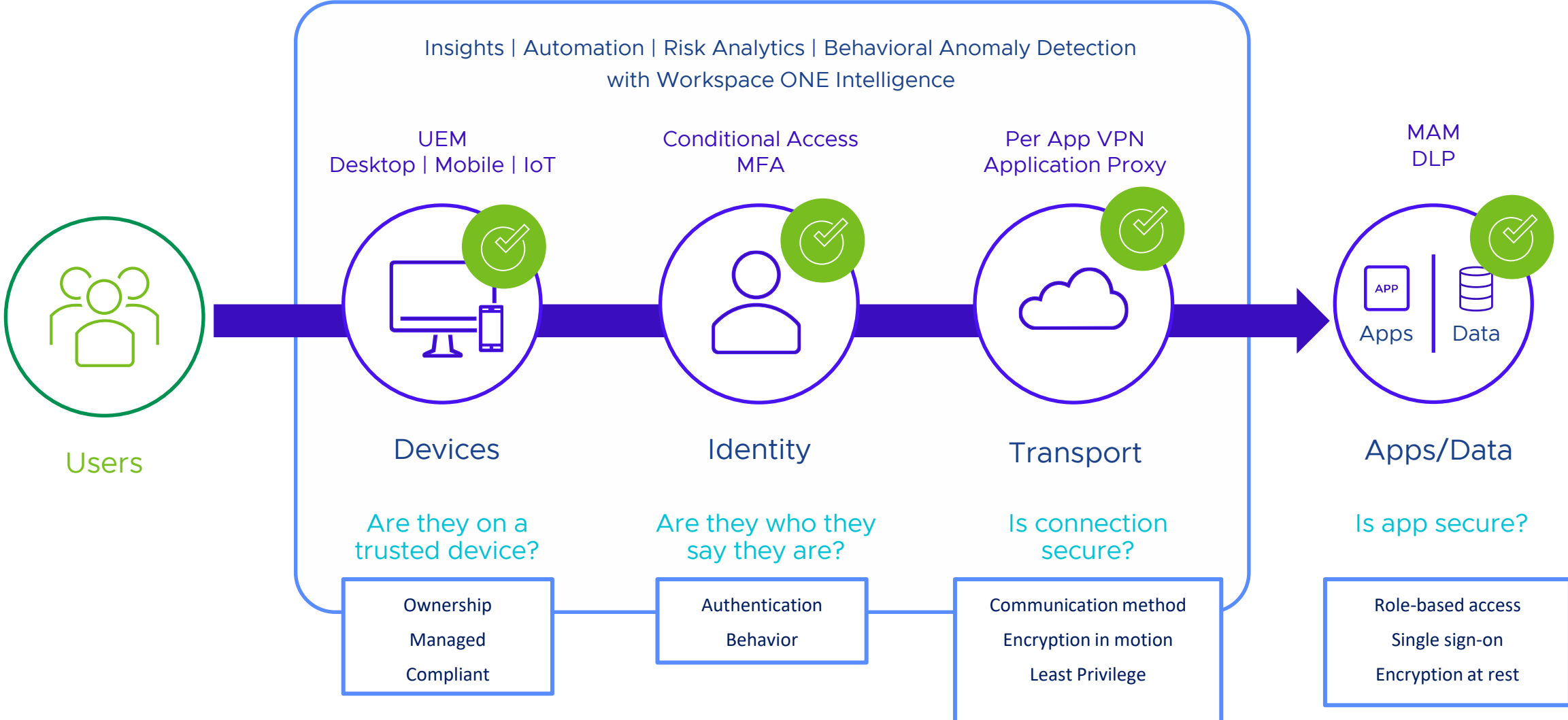
Experience Analytics: Optimize employee experience across the workspace by proactively resolving performance issues, root cause analysis, predictive analytics and automation.



Powerful Automation: Automate processes to increase security hygiene across your environment, meet compliance requirements and increase employee productivity.

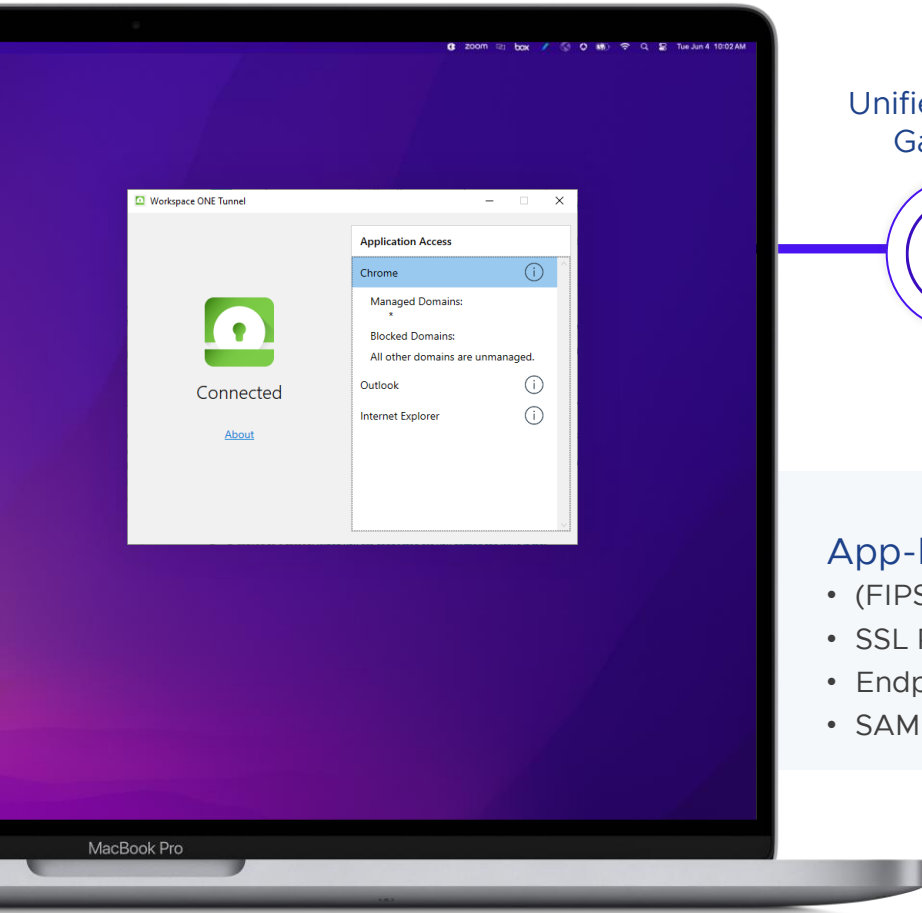
Zero Trust Conditional Access

Ensure compliance across the platform for maximum security

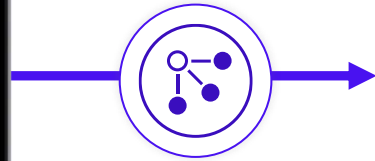


Workspace ONE Tunnel

Secure connectivity to applications and resources



Unified Access Gateway



in your datacenter
or favorite cloud

App-level Secure Connectivity

- (FIPS 140-2) TLS v1.2+
- SSL Pinning
- Endpoint + User Trust with WS1
- SAML 2.0 compliant



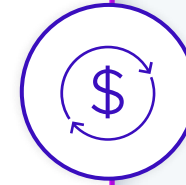
Zero Trust Security

Contextual, least-privileged access from the device to the network; integrates with Workspace ONE granular policies and controls



Simplified User Experience

Connects when users need it and hides when users don't need it; automatically protects all kinds of apps



Cost Effective + Easy to Manage

Easy migration from VPNs; secure and efficient; simplified administration; works with and without UEM



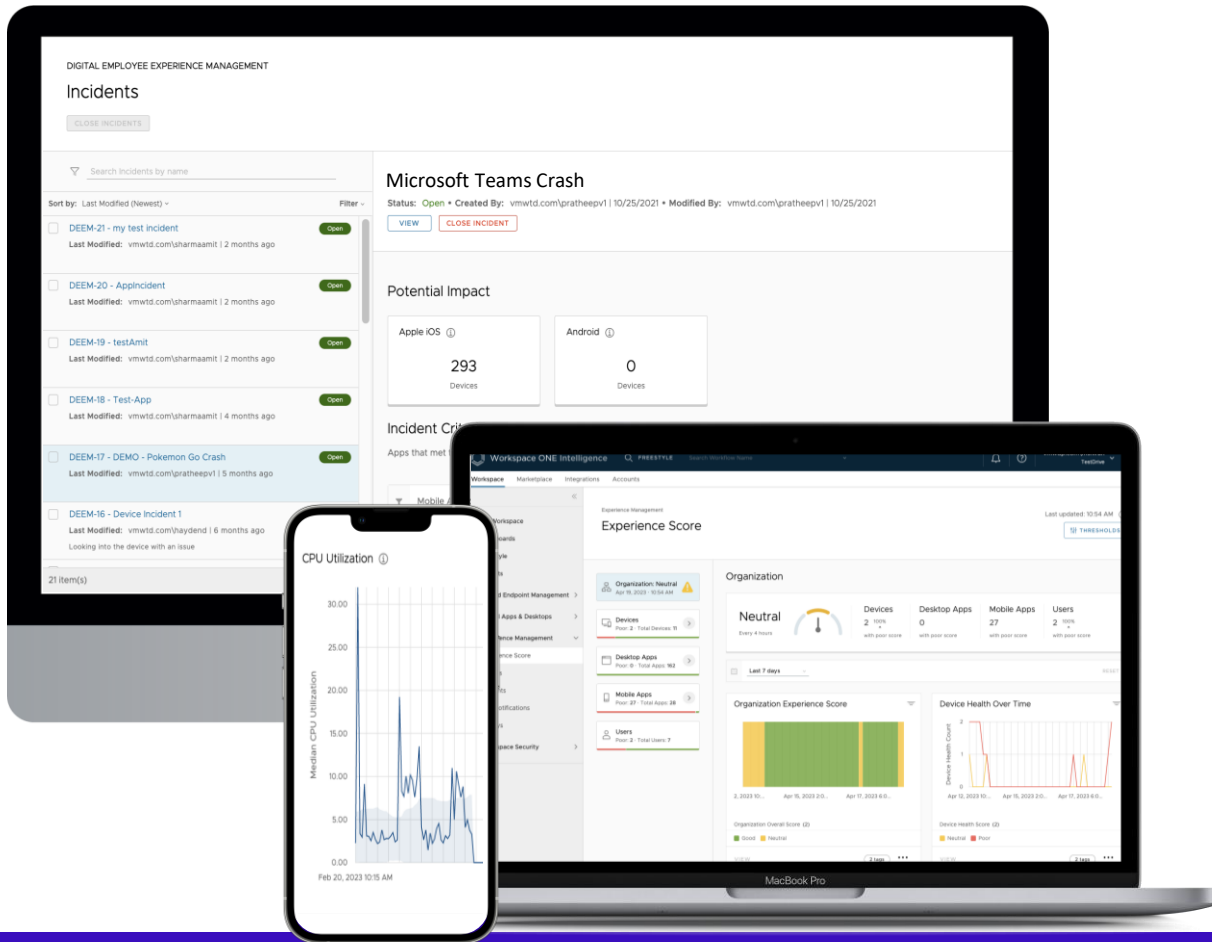
IT and Security Insights

Observe application behaviors and sculpt policies; demonstrate compliance; evaluate and report on performance, capacity, and risk

Digital Employee Experience Management

Extend Freestyle Orchestrator for Proactive and data-driven IT

ADDITIONAL LICENSE



Measure

Workspace metrics impacting experience across any device, OS and app, and user sentiment. Gain real time visibility and actionable insights



Analyze

Data and proactively identify and prevent issues. Investigate with guided and contextual root cause analysis



Remediate

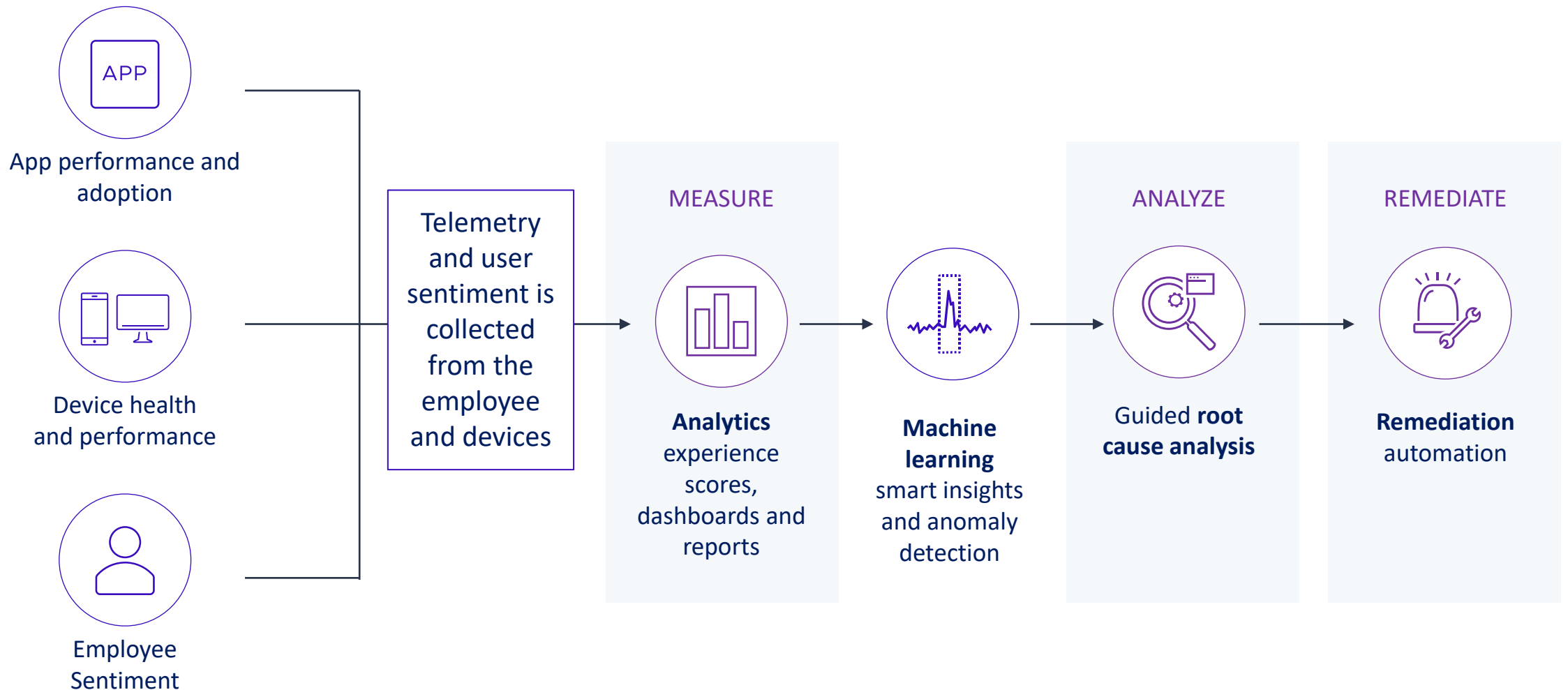
Issues with intelligent workflows based on predefined rules and conditions. Integrate with 3rd party tools across your ecosystem. Notify users.

A holistic approach for digital employee experience that combines environment KPIs with employee sentiment

Digital Employee Experience Management

Measure, analyze and remediate to assure employee experience

ADDITIONAL LICENSE



Workspace ONE Mobile Threat Defense

ADDITIONAL LICENSE

Comprehensive mobile threat protection powered by industry leader Lookout. Protect corporate and BYOD devices; iOS, Android, and Chrome OS.

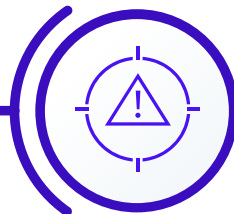
Integrated with
Workspace ONE



Improve compliance with turnkey deployment and activation via Workspace ONE Intelligent Hub



Security information and notifications presented in Workspace ONE Intelligent Hub



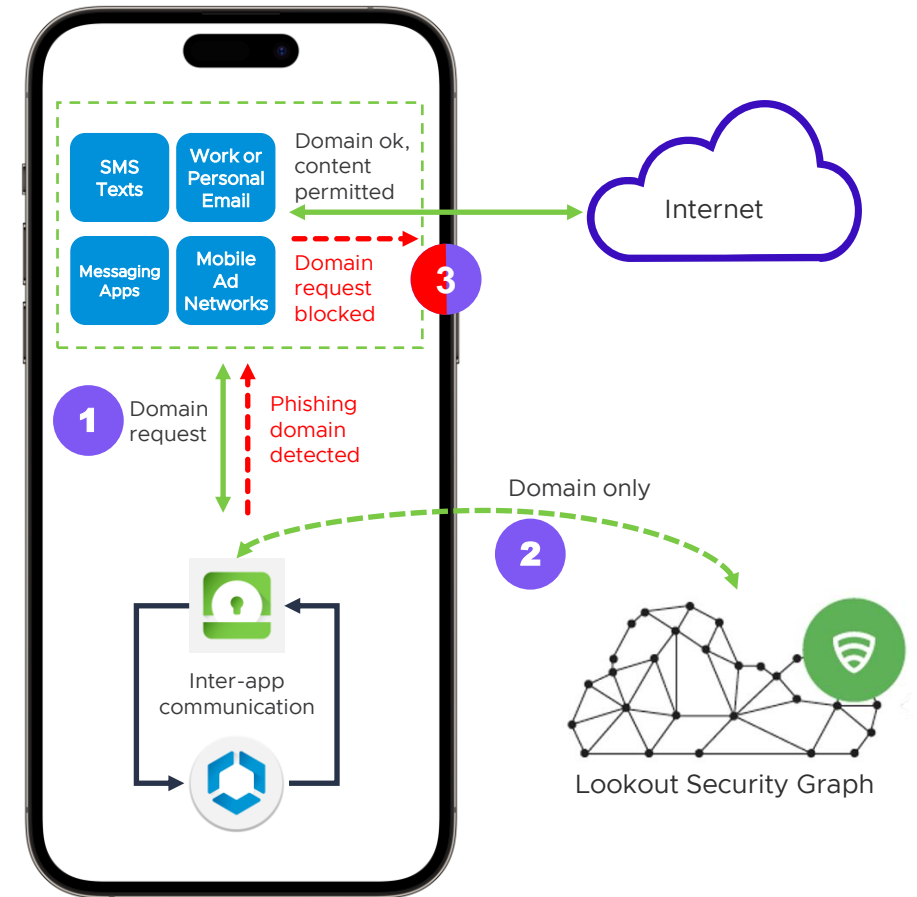
Automatically address risk in real time via Workspace ONE UEM

Mobile Threat Defense

Combat phishing on iOS devices

ADDITIONAL LICENSE

- Protect users at the DNS level before web requests are loaded
- Inspection of URLs using DNS information from Mobile Threat Defense powered by the Lookout Security Graph
- Privacy by design: No content inspected, sharing of blocked URLs is a configurable option
- All URLs from personal and work email apps, text messages, and messaging platforms are inspected
- Configure policies to allow or block certain content and domains
- Compatible with Tunnel per-app and full device VPN modes

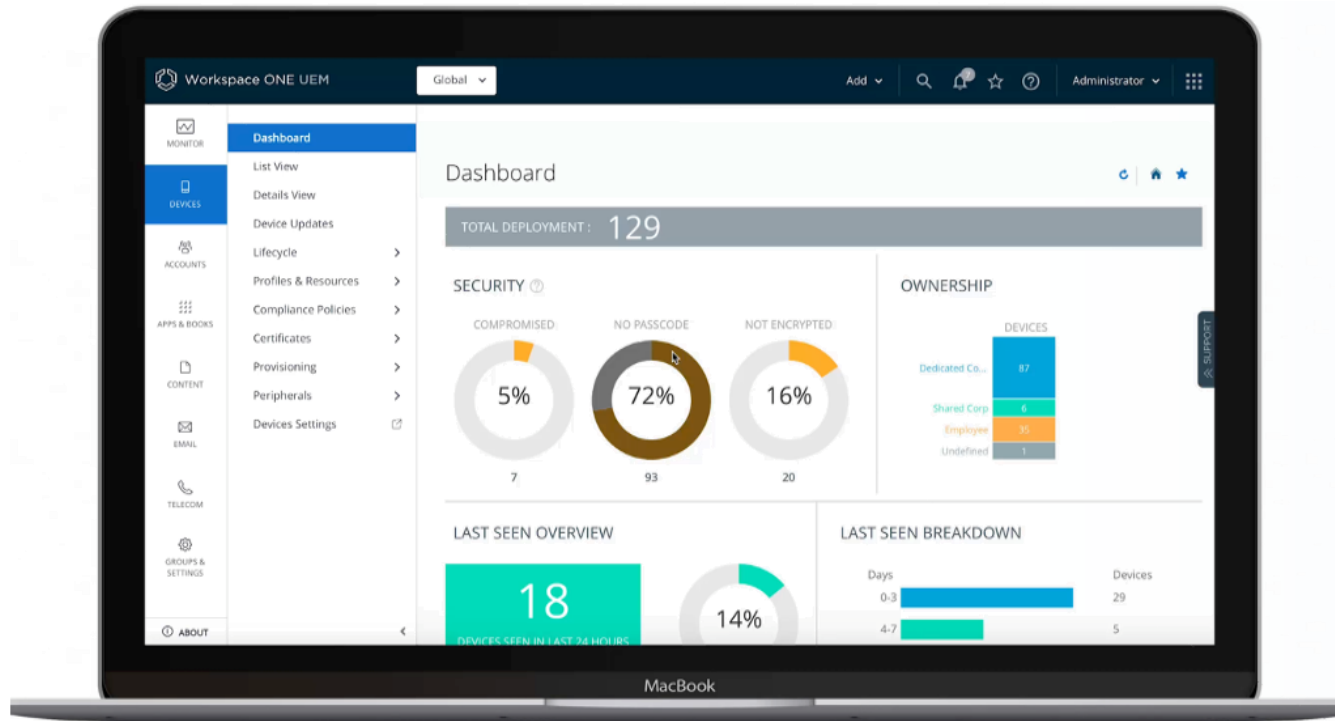


Filtering and tunneling work together to solve mobile security challenges

Workspace ONE Assist for Remote Support

ADDITIONAL LICENSE

Remotely support devices in the field or office from the Workspace ONE Console



REMOTELY CONNECT

from the Workspace ONE console in seconds



Access and export detailed device INFO

for reporting and remote troubleshooting



VIEW devices in real-time

to quickly resolve device, network or app issues



Enhance PRIVACY

by notifying users when their screen is visible and enable them to pause a remote session



macOS

iOS

omnissa™

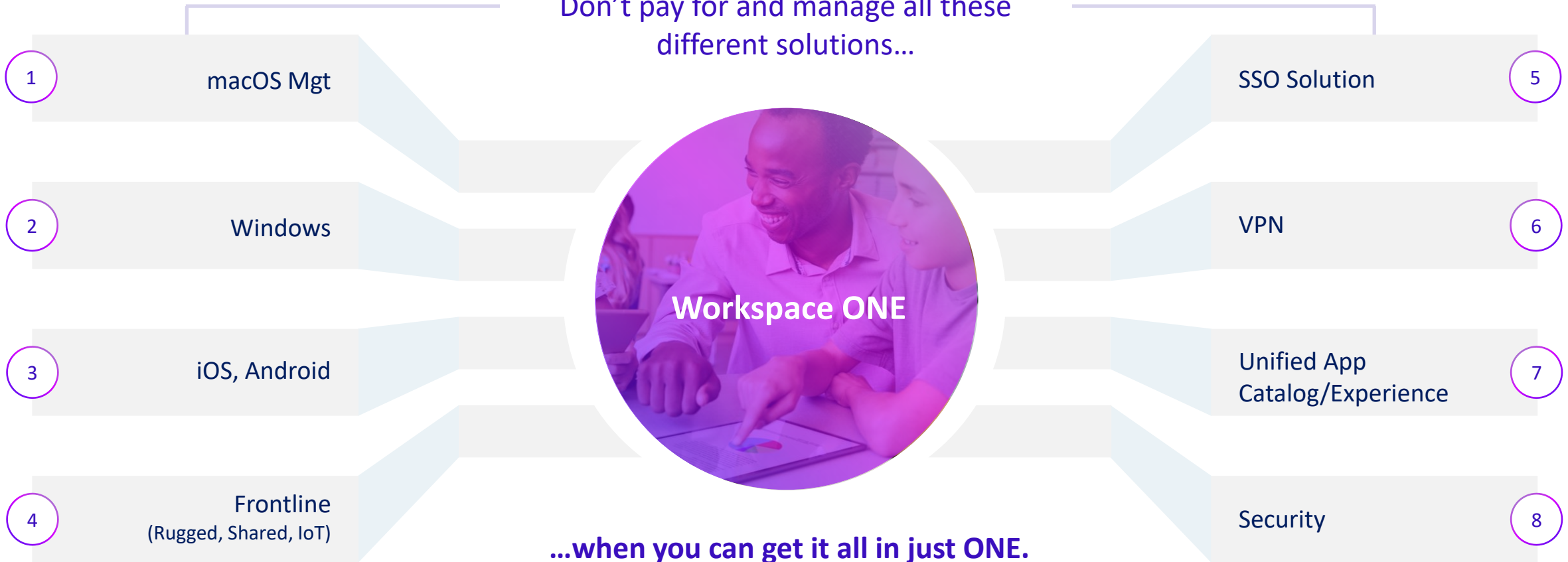
Thank you

APPENDIX

Workspace ONE: Unified Management

All your critical, cutting-edge functionality in a single solution: consolidation saves money

Don't pay for and manage all these different solutions...



...when you can get it all in just ONE.

What we've learned about hybrid work

Hybrid is the new norm, however challenges still exist

Challenges in experience, security, and complexity remain



Compounded with additional challenges



Attrition • Reduced budgets
Skills gaps • Uncertain environment